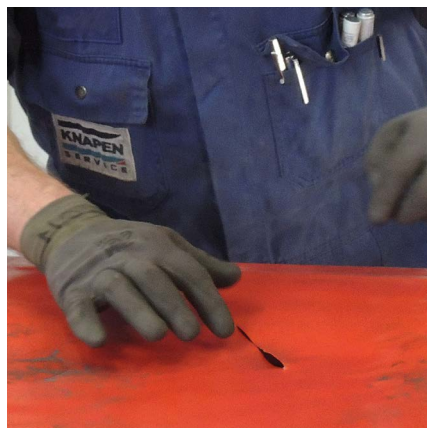


Preventing damage to the roof sheet



LOWEST COST OF OWNERSHIP

An important spearhead at Knapen Trailers. The total costs of a moving floor trailer are in part affected by the roof sheet. With that in mind, our specialists are keen to help prevent damage such as holes and tears in the roof sheet. As a result you are guaranteed the lowest user costs and maximum useful life. If your sheet does unfortunately suffer damage, there is now a possibility of carrying out immediate repairs with a special repair tape.



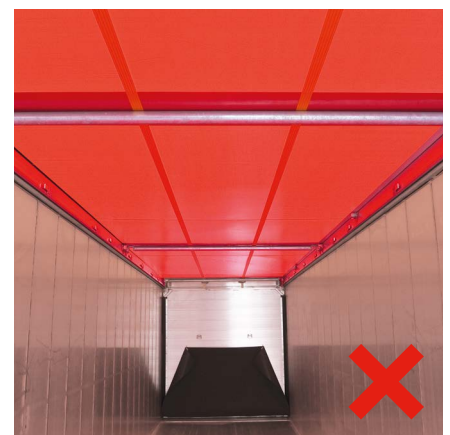
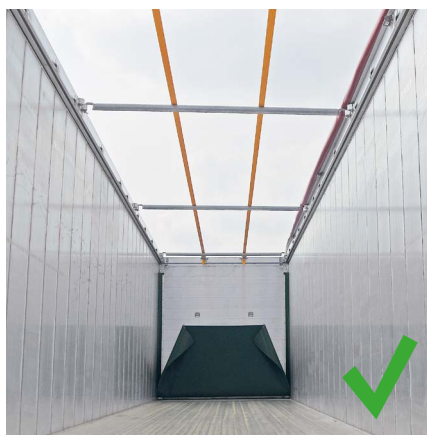
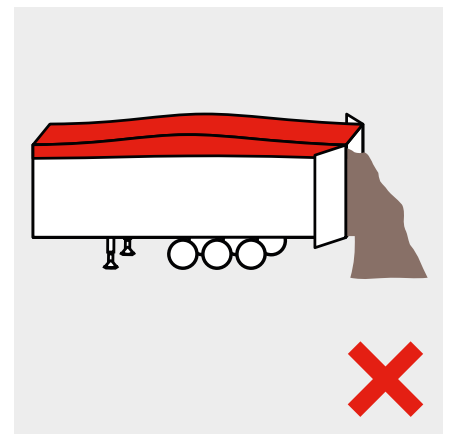
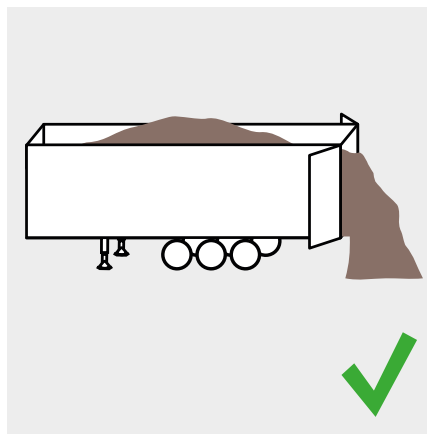
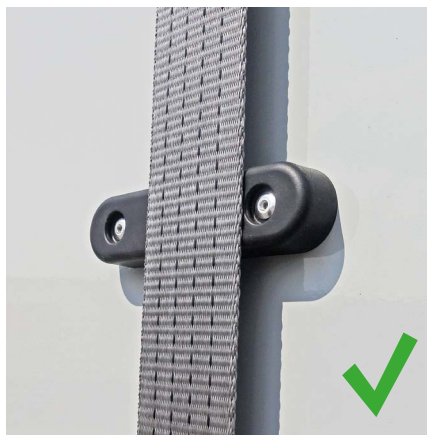


TIP 1

Extend the useful life of your roof sheet

By sticking to the following tips, you can prevent damage to your roof sheet:

- Remove any materials left behind on the bars after loading or unloading before closing the roof sheet.
- Ensure that the tensioning straps are well tightened and remain well tightened
- Ensure that the central elastic cord at the rear is carefully fitted in place
- Heap loading causes greater wear to the roof sheet. Following departure, the load will settle, causing the tensioning straps to work loose. Check and if necessary tighten the tensioning straps, during your journey.
- Open the sheet when unloading drifting cargoes
- If the bars are bent, have them realigned as quickly as possible by your dealer or service point.
- If your trailer remains stationary for a long period of time, always open the roof sheet before the trailer is parked, so that no water or ice builds up on the roof sheet.





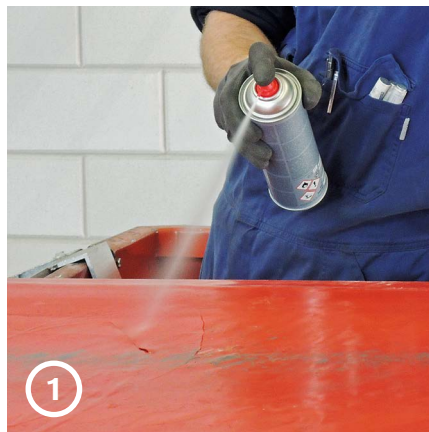
TIP 2

Repair cracks and holes immediately

If a crack or tear does unfortunately appear in the roof sheet, it is important you carry out repairs without delay. By repairing minor damage at an early stage, you will prevent further tearing of the sheet and avoid the need for complete replacement. You can simply carry out these repairs yourself. Knapen Trailers supplies a special, strong repair tape with material strength of 650 gr/m² for this purpose.

Apply the repair tape according to the following steps:

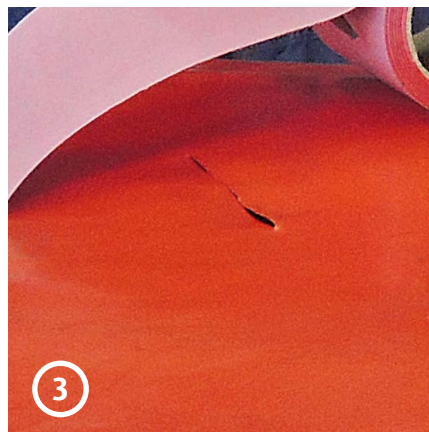
NB: This tape is also suitable for repairing your Pneumatic floor protection sheet or side wall protection sheet.



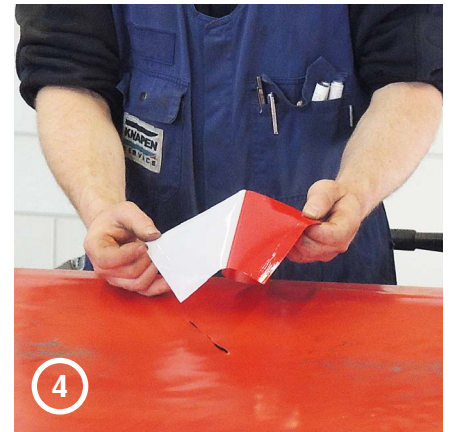
1 *Carefully clean the area to be taped with a grease-free and silicon-free cleaning agent*



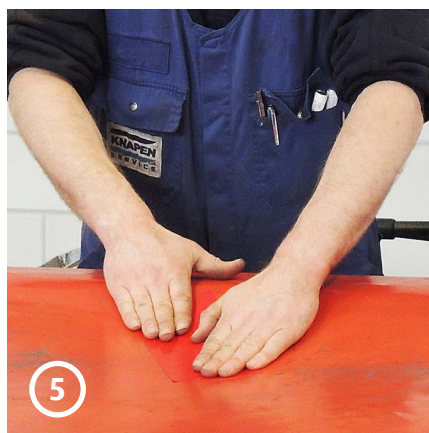
2 *Make sure that all dirt, grease, oil, etc. is removed from the surface to be repaired. Ensure that the surface is completely dry before applying the tape*



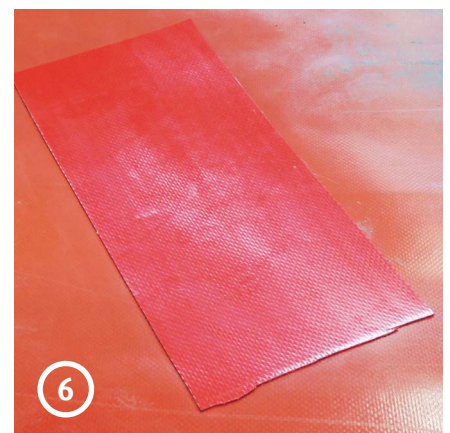
3 *Cut the required length of repair tape, from the roll*



4 *Remove the transparent film on the back of the tape*



5 *Apply the self-adhesive tape to the cleaned area of sheet to be repaired. Firmly press the tape onto the sheet, for several seconds.*



6 *Your sheet is now soundly repaired and you have avoided unnecessary costs.*



TIP 3

Never leave without a repair tape on board

By immediately applying repair tape in the event of minor damage, you prevent further tearing and all the resultant costs. You will also prevent leaks so cargo that is not allowed to become wet is kept dry. We have subjected the tape to extensive testing and the reactions have been very positive. A number of customers have therefore decided to supply each truck with a roll of tape, as a form of preventive maintenance.

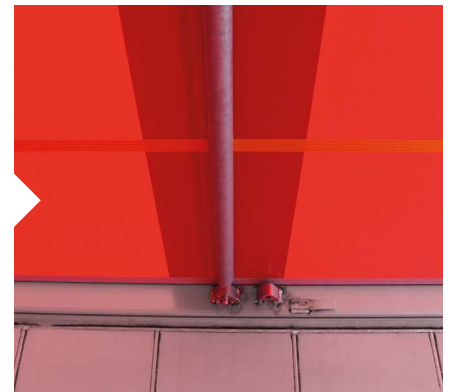


TIP 4

Only use roof sheets with extra strengthening at the contact surfaces

The roof sheet is especially susceptible to wear at the contact surfaces. Make sure that any new cover has extra strengthening at these points. Whatever type of roof sheet you use, all Knapen roof sheets are supplied with a double cover fabric at the most susceptible points such as the edges, the bars, at the bulk head and by the profile for the roof sheet.

Knapen moving floor trailers are suitable for multiple purposes. For that reason, Knapen Trailers supplies a variety of different high-quality roof sheets. As standard, we use a strong 700gr/m² sheet. For customers requiring even stronger quality, we can supply double-woven Panama roof sheets with a material strength of 900 gr/m² and Kevlar-reinforced Carapax roof sheets. On request, we can also fit roof sheets with a translucent section.



SPARE-PARTS

New roof sheet

Simply order a new roof sheet from your [dealer](#) or [service partner](#) on the basis of your chassis number. Based on this number, the precise dimensions, the reinforcement positions and the colourway can be identified.

Sheet-repair tape

To order sheet-repair tape, contact your [dealer](#) or [service partner](#)!



60101911
Sheet-repair tape silver
RAL9006 100mm x 5m



60101913
Sheet-repair tape red
RAL3001 100mm x 5m



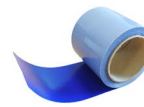
60101915
Sheet-repair tape white
RAL9016 100mm x 5m



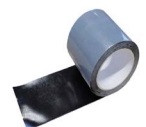
60101912
Sheet-repair tape grey
RAL7038 100mm x 5m



60101914
Sheet-repair tape
yellow RAL1023 100mm
x 5m



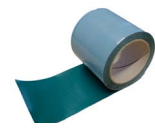
60101916
Sheet-repair tape blue
RAL5002 100mm x 5m



60101917
Sheet-repair tape zwart
RAL9005 100mm x 5m



60101918
Sheet-repair tape orange
RAL2008 100mm x 5m



60101919
Sheet-repair tape green
RAL6026 100mm x 5m

Tip: Print out the drivers' tip and display it in the drivers' canteen, for all your colleagues.

Are you a driver working with moving floor trailer and do you have a useful tip for your colleagues? Submit your tip to marketing@knapen-trailers.nl and maybe we will publish it in the next newsletter.

Subscribe via www.knapen-trailers.eu/newsletter and receive all the new tips free of charge in your mailbox.