

# The right driving height



You are sure to have seen them on the road. Truck – trailer combinations where the front of the trailer has an upward or downward pitch in comparison to the truck. This is usually because the trailer is coupled to a truck with a fifth wheel height that deviates from the original fifth wheel height. The misalignment not only looks strange, it also significantly increases the risk of damage to the trailer. In the framework of the Lowest Cost of Ownership, the specialists at Knapen Trailers are happy to help you with the following tips about the benefits of driving at the right height.



## Tip 1

### Set a second driving height

Any height difference between the truck and the trailer can be partially corrected by setting a second driving height. This can deviate from the original height by up to 40 mm. If your moving floor trailer is equipped with a smartboard, you can programme the settings for the second driving height yourself. Refer to the manual supplied

with the system or ask your Knapen Service Partner. Unfortunately, this option is not available with a standard control box (with buttons). However, the standard operation can be expanded with this functionality. Your Knapen Service Partner can install the additional button and corresponding settings.

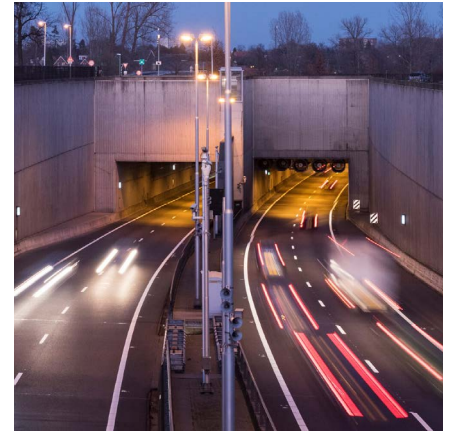




## Tip 2

### Avoid damage at viaducts or tunnels

Most moving floor trailers are built to the maximum permitted height. If you drive a truck with a higher fifth wheel, the front of the trailer will be even higher and you will be unable to safely clear a viaduct or tunnel, for example. Always check the total maximum height of your truck and trailer before leaving and adjust the driving height or change your route if necessary.



## Tip 3

### Adjust ground clearance with obstacles, loading docks and poor road surfaces

Since September 2021, European regulations relating to the height of underrun protection on new commercial vehicles have changed. In general, this has decreased the ground clearance in order to offer more protection in the event of head-to-tail collisions. The lower height may prevent you from passing over certain obstacles. You may also need to access a loading dock with a ramp you are unable to negotiate. Setting a second driving height can offer a solution in this case.



And if you have to drive over a road in rough condition with lots of potholes, setting the moving floor trailer to a second driving height can help. This creates a little more ground clearance and can prevent damage.



## Tip 4

### Save unnecessary costs on the axle system, air bags and rear spray protectors

The axle system and air bags on your moving floor trailer have been mounted in such a way that, combined with the original fifth wheel height, they are optimally set to limit excessive suspension movement. This maintains equal pressure per axle on the road surface. If a moving floor trailer pitches too far up or down, this disrupts the configuration and the suspension travel will be affected.

This may potentially affect the axle pressure and/or damage the air bag.

In addition, the rear spray protectors will also suffer if the front of the trailer tilts too far upwards. They are more likely to touch the road surface, which will cause wear and tear sooner, or the friction may even remove them completely.

Do you change between trucks or trailers?  
Always check the height difference between your truck and the trailer to avoid unnecessary costs and damage.



## Tip 5

### Avoid compromising your driving comfort and unnecessary wear to the tyres

If the fifth wheel is positioned too high or too low in relation to its original height, your driving comfort will be compromised. A too low fifth wheel height will depress the air suspension on the first axle too much. It will exceed the recommended setting margin. This may cause instability of your trailer. If your trailer is equipped with a self steering axle, it may show jittery handling if the setting is too high or too low. In both cases, this may have a negative impact on your driving comfort.

An incorrect driving height can also cause additional wear to your tyres.  
So always check the height difference after changing your truck or trailer and set the correct driving height.

## SPARE PARTS

To order spare parts, please contact your [dealer](#) or [service partner](#)



**BDIC047086**  
Control box lift axle



**30166469**  
Smartboard II  
+ cable EBS-E



**30110658**  
Rear spray protector  
large



**30121042**  
NEXT rear spray protec-  
tor large

**Tip: Print out these tips and hang them up in the company canteen for your colleagues to read.**

Are you a driver on a moving floor trailer and do you have a useful tip for your colleagues?  
Then send your tip to [marketing@knapen-trailers.nl](mailto:marketing@knapen-trailers.nl) and maybe your tip will be published in the next newsletter.

Subscribe via [www.knapen-trailers.eu/newsletter](http://www.knapen-trailers.eu/newsletter) and receive all new tips in your mailbox for free.