

What to do if your moving floor is not functioning?

Maybe you have been there before: You are far from home in a remote or busy location and exactly when you want to unload your moving floor trailer, the moving floor no longer works. Your schedule is running hopelessly behind. At busy locations, you might even be sent away with your full trailer. Before you drive your full trailer to a service point or call a contractor with a mobile crane to unload your trailer, the specialists at Knapen Trailers will be happy to give you a few handy tips that will, in many cases, help you get the moving floor back on track quickly.



Tip 1A

Try unload using the emergency controls

In many cases, the cause of a failure of the moving floor to unload can be found in an electrical malfunction, which can also be seen from the orange side lights, which will then no longer be lit. After all, the moving floor gets its power from this side lights. Fortunately, the moving floor itself still works with this type of malfunction, but the electrical controls no longer switch on the moving floor. In this case, you switch on the moving floor manually using the emergency controls.

As soon as you have unloaded, you must, of course, investigate the exact cause of the malfunction. If your moving floor only works using the emergency controls, the cause is most likely electrical in nature. This may have occurred, for example, in the plugs, cables, a broken fuse or in the remote control. Your Knapen dealer or Knapen service partner can help you find the cause.



Tip 1B

Try the emergency controls out at your leisure

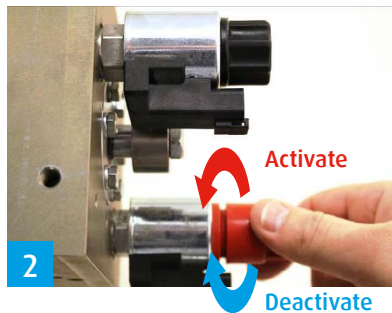
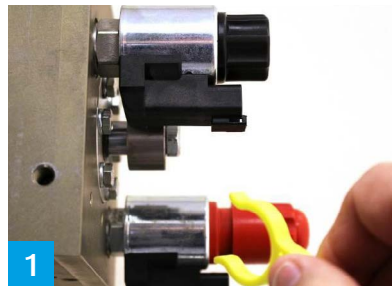
Do you know Murphy's law? Your moving floor will only fail to move when it is not at all convenient for you. So, if you have enough time, try the emergency controls once. By trying this quietly, you are already familiar with it and you can use it more easily if this is ever unexpectedly necessary.



Tip 1C

Always put everything back in its original position

After using the emergency control, it is important that you always return the emergency controls to their original position! If you do not do this, the moving floor will start as soon as you switch on the PTO again. This with all its undesirable consequences, such as damage to the rear doors, and the associated costs.

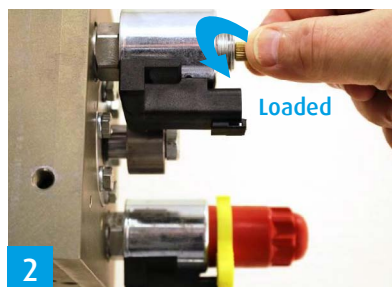
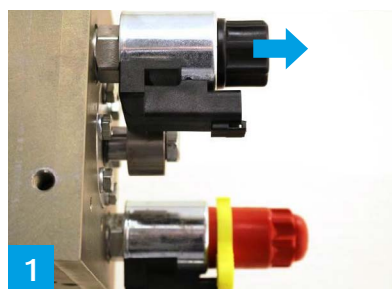


Emergency controls:

Of course, always open the rear doors first and switch on the PTO;

On the control valve (that is the large metal block) of your trailer is the red button which is equipped with a yellow locking clip. If you remove this locking clip, you can manually switch on the moving floor controls. Turn the red button on top of the on/off coil clockwise as shown in the picture. The moving floor starts unloading immediately!

Make sure that, after unloading, you switch off the emergency controls again and then re-attach the locking clip.



Did you know that you can also use the emergency controls to load the moving floor?

If you want to load the trailer, unscrew the black cap (be careful not to lose the O-Ring). The brass coloured screw under this cap is set to "unload" by default. To load, turn the screw counter-clockwise. Then follow the above steps of the emergency controls, see Tip 1A.

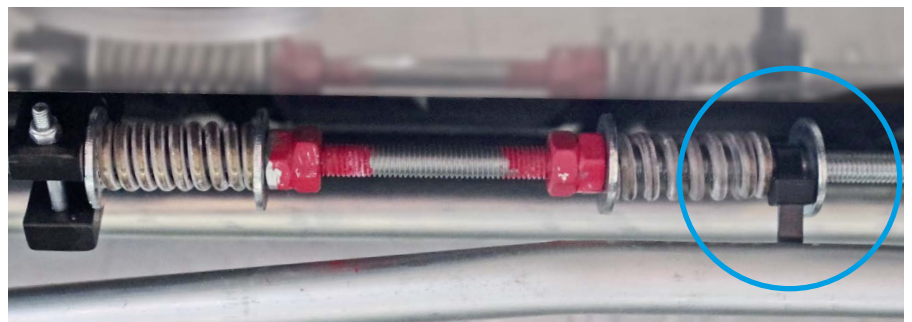
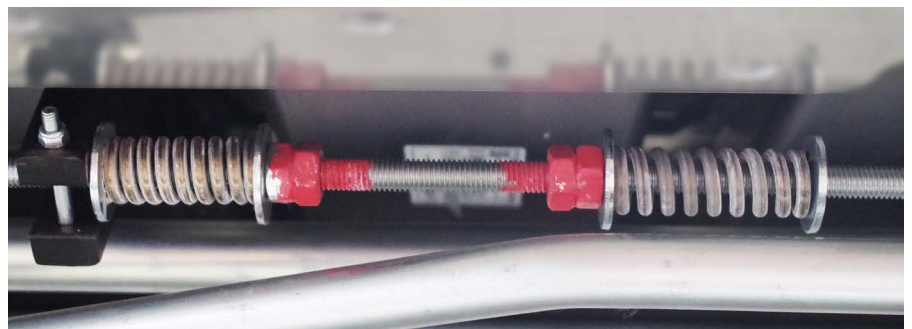
The black cap is generally difficult to reach. If necessary, briefly remove the blue protective cover.



Tip 2

Repair broken springs temporarily with a TyRap

Does your moving floor make half a turn and then stop? And does the oil pressure gauge shoot to 225 Bar? Or do you hear that the system sounds like it is 'hitting hard'? Then check if there is something wrong with the threaded rod. If the springs of this threaded rod are broken, the moving floor will not switch properly anymore. In this case, a temporary solution to be able to still unload/load is to place a TyRap to fill the space of the defective spring and to shift the switching moment.



SPARE PARTS

When your trailer is unloaded, you can easily replace a broken spring yourself. The spring fits all brands of moving floor trailers and you can order it from your Knapen Trailers [dealer](#) or [servicepartner](#).



BDIC008019
Compression spring
for threaded rod



Tip 3

The checklist

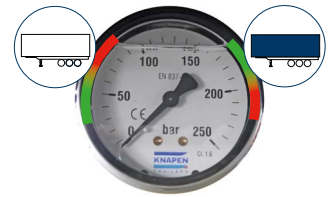
You do not get your moving floor to work with tips 1 and 2? Then use the checklist to find out the possible cause.

In the unlikely event that despite the above tips you are unable to unload on location, you can contact your Knapen Trailers [dealer](#) or [servicepartner](#). They will be happy to help you find the cause of the malfunction.

1. Have the hydraulic couplings between your truck and trailer come loose?



2. Is the floor system perhaps overloaded? Check the oil pressure gauge for this. At 225 bar pressure the floor system will be overloaded. It is also possible that the moving floor is dirty, or that the load is sticking. In case of overloading, the trailer must be (partially) unloaded with a mobile crane.



3. Is the emergency button on the trailer or the wired remote control perhaps switched on? If the trailer is equipped with the unique Knapen Trailers remote control, for your safety the trailer has an emergency button on the receiver.



4. Is the temperature sensor perhaps switched on? If the trailer is equipped with a temperature sensor, it is possible that the moving floor has been switched off due to a too high oil temperature. In this case, a light on the sensor is lit. You will find the sensor under the control valve. When the oil has cooled down you can switch on the moving floor again.



Tip: Print out the drivers' tip and display it in the drivers' canteen, for all your colleagues.

Are you a driver working with moving floor trailer and do you have a useful tip for your colleagues? Submit your tip to marketing@knapen-trailers.nl and maybe we will publish it in the next newsletter.

Subscribe via www.knapen-trailers.eu/newsletter and receive all the new tips free of charge in your mailbox.