

Loading/unloading of general cargo



Moving floor trailers are multi-functional. By alternating between journeys with bulk cargo and journeys with general cargo (such as pallets, big bags and paper rolls) you maximise the profit on each journey. This way the trailer can be used very efficiently.

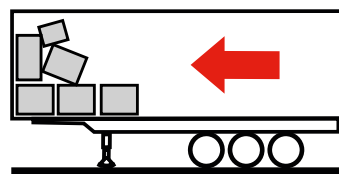
For loading and unloading general cargo, the moving floor system can be used. Depending on the type of load and the type of moving floor, the driver can also choose to load/unload with the aid of a fork-lift or a hand pallet truck. The specialists at Knapen Trailers will be happy to tell you more about the possibilities with regard to general cargo, so that you are assured of the lowest operating costs and the maximum life of your moving floor trailer.



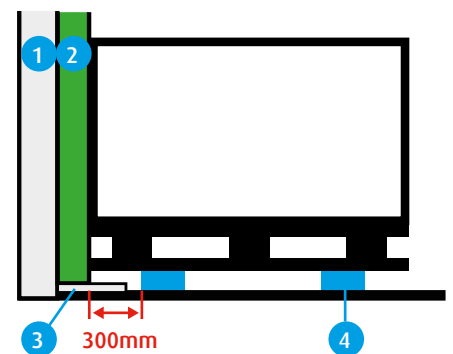
Tip 1

Prevent damage to bulkhead and the cover plate

When loading pallets, it is important that the load does not move too far forward. This is to prevent damage to the bulkhead. Also make sure that the cover plate of the floor at bulkhead is not damaged. For this reason, place a wooden board (soft wood) of approx. 300x18x2350 mm under the pallet at the first row of pallets and always keep space free between the wooden board and the cover plate.



In order to prevent damage, make sure that the load does not move too far forward.



1	Bulkhead
2	Movable bulkhead
3	Cover plate
4	Wooden board



Tip 2

Prevent damage to the moving floor and the walls

A standard Knapen trailer can be loaded with 33 euro pallets.

Make sure before loading that both the floor and the walls are clean. This prevents unnecessary damage due to sliding of the pallets. This is because by getting dirty, pallets can move across the floor while tilting. If there is still dirt on the walls, it can end up on the load.

You can prevent damage to the floor and walls with the aid of these load positioning tips:



1 Place only smooth, good pallets, without protruding nails, on the floor to prevent the pallets from remain standing in their position, become misaligned or leave (deep) scratches in the floorboards. If necessary, place a wooden board (soft wood) of approx. 300x18x2350 mm under the pallet.



2 For a maximum load, position the pallets transversaly, and two side-by-side in the width of the trailer.



3 To prevent damage, all pallets must be clear from the sidewall.



4 After loading the desired number of pallets, the load must be secured in accordance with regulations. This is to prevent shifting during transport. Then close the rear doors and activate the door locking device.





Tip 3

Driving safely over a moving floor with fork-lift or hand pallet truck

Depending on the type of floorboards, you can also load and unload using a fork-lift or a hand pallet truck. Here the width of the tires in combination with the weight of the loaded fork-lift or hand pallet truck is decisive, or the pressure on the floor per unit of area. The frequency of driving over the floor determines whether your floor system is suitable for this. The 6 mm and 10 mm floorboards fitted with a standard floor profile can, depending on the weight of the loaded pallet, driven over with a standard 2T fork-lift and a hand pallet truck. Consult the user manual of your own trailer for your options.

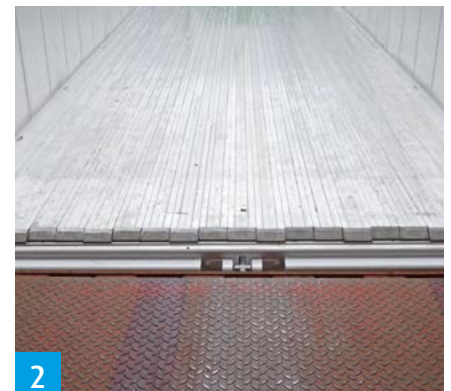
By taking these issues into account you prevent unnecessary damage to your moving floor as well as all the costs that would entail:



	6 mm, 21 boards, standard profiles	10 mm, 21 boards, standard profiles
Driving over the floor system with a fork-lift	For normal use (1x per day)	For intensive use, (more than once a day)
Maximum weight per pallet	1,500 kg	kg
Maximum wheel pressure per wheel (incl. loaded pallet)	1,000 kg	1,500 kg
Width of front tire (each)	12 inches (= 305 mm)	12 inches (= 305 mm)
Width rear tire (each)	9 inches (= 229 mm)	9 inches (= 229 mm)



1 The trailer must be coupled to a truck before you start loading/unloading with a fork-lift or hand pallet truck.



2 The floor must be in the rearmost position.



3 When loading/unloading at a loading platform, the floor of the trailer must be level with the loading platform. Note: After loading or unloading, always put the height back to the driving position.





4

The floor system must NOT be activated during loading and unloading with the forklift truck or hand pallet truck.



5

Always load/unload calmly. There must be no hard braking or accelerating on the moving floor. Pallets and general cargo must be placed on the floor. You may also not make a sharp turn.



TIP 4

The transport of paper rolls/ paper bales

Do you also transport paper rolls and paper bales? In that case, take into account the following points:

- For the transport of paper rolls and paper bales we advise floorboards without a profile (smooth). This to prevent damage to the rolls or bales.
- When loading/unloading paper rolls and paper bales, make sure that the clamping pincer does not rub against the side walls in order to avoid unnecessary damage. To protect the side walls, you can opt for small wear plates on both inner walls.



Paper rolls



Wear plates on the inner wall.

Tip: Print out the drivers' tip and display it in the drivers' canteen, for all your colleagues.

Are you a driver working with moving floor trailer and do you have a useful tip for your colleagues? Submit your tip to marketing@knapen-trailers.nl and maybe we will publish it in the next newsletter.

Subscribe via www.knapen-trailers.eu/newsletter and receive all the new tips free of charge in your mailbox.