

# Prevent damage to the brake system

The brake system on a Knapen moving floor trailer is controlled using the EBS modulator. Damage or contamination can cause the brake system to stop functioning correctly. A malfunction will reveal itself in the form of unusual behaviour in the modulator, brakes, air suspension or lifting axles. For example, valves may become stuck or you may hear air leaking below the trailer. Another possibility is that the driving height of your trailer has fallen during the night, forcing you to wait until the air bags are refilled, before you can depart. The costs for repair or replacement are high. Since Lowest Cost of Ownership is a key spearhead at Knapen Trailers, the specialists at Knapen Trailers are keen to help you avoid damage to your brake system, so you can enjoy the lowest cost of ownership.



## TIP 1

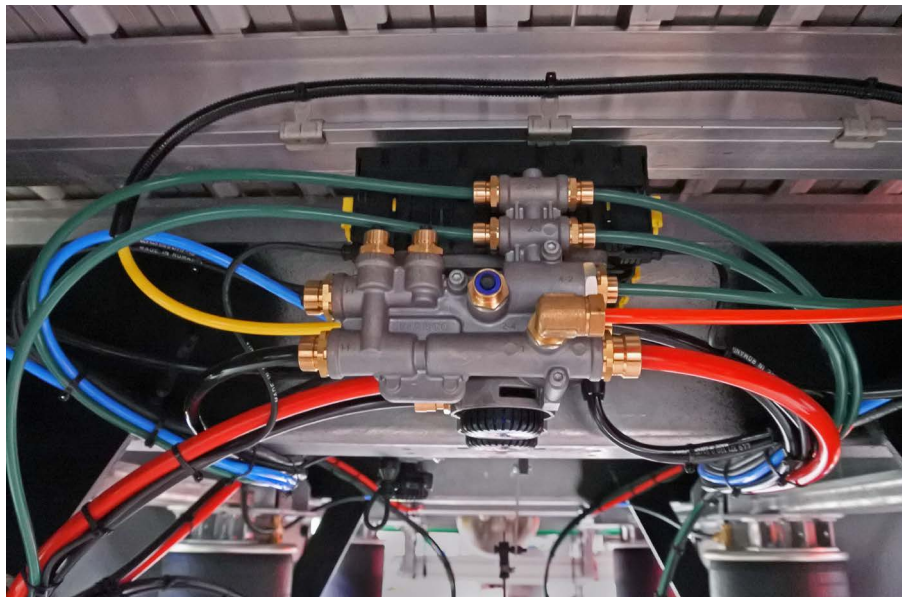
### Regularly clean the EBS modulator and check the cabling

The EBS modulator is located between the axles, below your trailer. It is important to regularly clean the EBS modulator and the cabling. For cleaning the EBS modulator, remember to use compressed air, if necessary in combination with a soft brush. Never use a high pressure cleaner since this could cause moisture to enter the system!

Also check for damage to the cabling. Damage may be caused by incidents or by material kicked up from the road surface. Finally, after cleaning, check that the cabling is still correctly inserted.

Regular cleaning and checking of the cables will prevent moisture and dirt entering the connections and/or the modulator, with all the unwanted consequences.

For tips about cleaning your trailer, check out the driver's tip on weight saving as a result of cleaning.



*The EBS modulator is located between the axles below your trailer*



*Regularly clean the EBS modulator and the cabling*



*Result: as a result of moisture/poor connections, the connections of the EBS modulator can be burned out.*



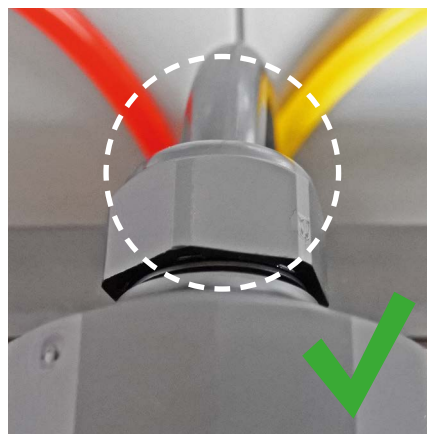
## TIP 2

### Check the cables and the sealing cap on the headboard

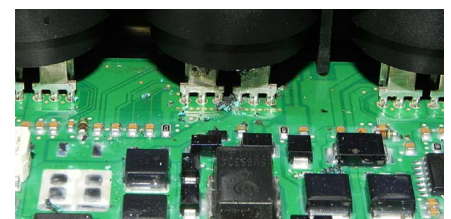
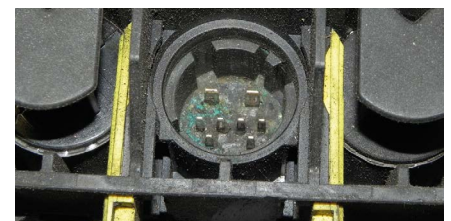
The connections for the EBS system are located on the headboard of your trailer. Regularly check to ensure that the sealing cap closes correctly and is not broken. Also check at the back whether the cable is still fully inserted in the union nut. If the union nut is not tightly connected or is open, moisture can find its way into the cable. The result of corrosion in the cabling, plugs and / or the PCB.



*The connections for EBS modulator are located on the headboard of your trailer*



*Ensure that the cable is fully inserted into the union nut to prevent corrosion*



*Result: if the union nut is poorly tightened, moisture can enter the cables leading to corrosion*





### TIP 3

**Always close the cover on the hose couplings to prevent contamination of the air hoses.**

All air hoses have a coupling with a cover to seal off the end of the hoses. This coupling ensures that no contamination can enter the hoses. When disconnecting hoses, make sure that you always connect the couplings to the headboard.

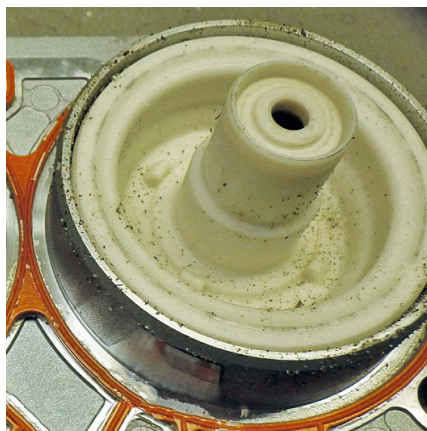
It is also important to suspend the air hoses from the truck after uncoupling. This prevents sand/contamination penetrating the air connections and air hoses on the truck. If your truck's air hoses do become contaminated, after connecting the moving floor trailer, the contaminants can make their way directly into the air system and EBS modulator, with the compressed air passing through the hose. As a result, the contamination can damage the EBS modulator itself.



*Always close the covers on the hose couplings so that no contaminants can enter the hoses*



*Tip: Suspend the air hoses from the truck after uncoupling.*



*Result: As a result of contamination in the air hoses, the inside of the EBS modulator also becomes contaminated.*

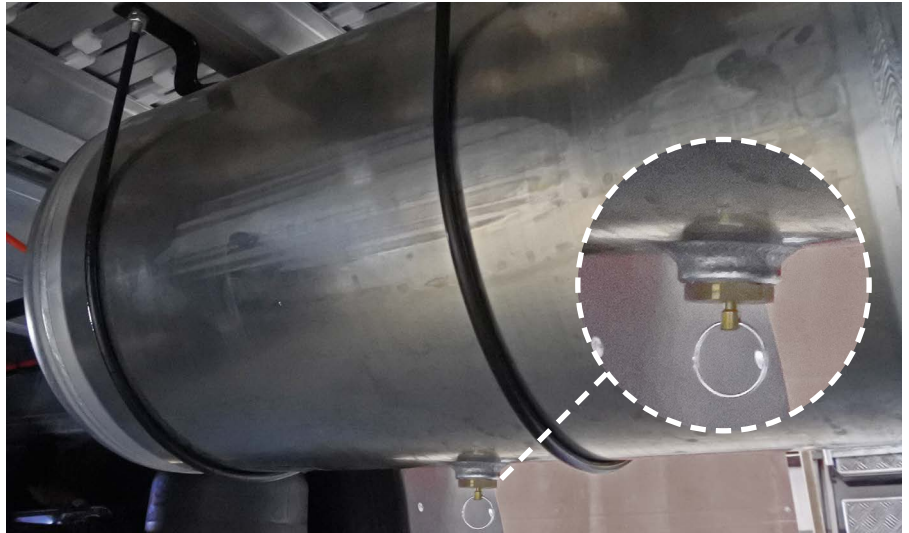


## TIP 4

### Check that the compressed air from the truck is dry and clean

The compressed air system in the truck and your moving floor trailer are connected together. If the air from the truck is not dry and clean, this can also lead to contamination in the air system. The underlying cause may be a defect in the air drier on your truck, or worn sealing rings in the compressor. This can cause moisture or oil to penetrate the compressed air system. This in turn can lead to contamination or short circuit in the EBS modulator on your moving floor trailer.

It is easy to check whether the compressed air from your truck is dry and clean. Below the air tank on your trailer is a ring. Push this ring inwards and check whether water or oil are released. If this is not the case, normally speaking you can assume that the air quality from the truck is acceptable.



*Below the air tank of your trailer is a connection where you can check whether the air in the compressed air system is clean.*

If the cabling is damaged or if there is evidence of visible corrosion or contamination in the brake system on your moving floor trailer, this is generally known as 'damage through use'. This driver's tip is aimed at helping you to avoid incurring unnecessary costs in your brake system.

## SPARE-PARTS

Do you need to replace parts in your brake system? Your [dealer](#) or [service partner](#) can offer all the assistance you need!



**BDIC047366**  
Air coupling red + filter



**BDIC047093**  
EBS 7-pin plug



**BDIC047367**  
Air coupling yellow + filter



**BDIC006001**  
Draw spring 2.5x25x300x350 GLV



**BDIC047092**  
EBS 7-pin socket

**Tip: Print out the drivers' tip and display it in the drivers' canteen, for all your colleagues.**  
Are you a driver working with moving floor trailer and do you have a useful tip for your colleagues? Submit your tip to [marketing@knapen-trailers.nl](mailto:marketing@knapen-trailers.nl) and maybe we will publish it in the next newsletter.

*Subscribe via [www.knapen-trailers.eu/newsletter](http://www.knapen-trailers.eu/newsletter) and receive all the new tips free of charge in your mailbox.*