

Pneumatic Rear door locking device: Your safety first!

Knapen Trailers operates according to three spearheads. Perhaps the most important of these is **Drivers' Ease & Safety**. This issue of drivers' tips is all about putting your safety first!

Practically every moving floor trailer is equipped with a pneumatic rear door locking device. We urgently recommend that you use this locking device every time you unload the vehicle, not only when unloading above a drop. The specialists at Knapen Trailers are happy to offer you tips for the use and maintenance of the pneumatic rear door locking device:

Tip 1: Use the pneumatic rear door locking device every time you unload

Depending on the type of cargo, (considerable) pressure can build up against the rear doors of your moving floor trailer. When releasing the door lock, the rear doors can swing open under considerable force. And the consequences can be serious.

Knapen Trailers therefore recommend that you use the pneumatic rear door locking device every time you unload. Once you release the door lock, the pneumatic rear door locking device keeps the doors of the loaded trailer firmly closed until the driver has moved far enough away from the doors, to release them safely. In this way, in addition to ease of use, the pneumatic rear door locking device guarantees additional safety for the driver and anyone else in the vicinity of the trailer.



Step 1 – Remember every time before you start loading: Always switch the pneumatic rear door locking device into the locked position using the green button on the control panel.

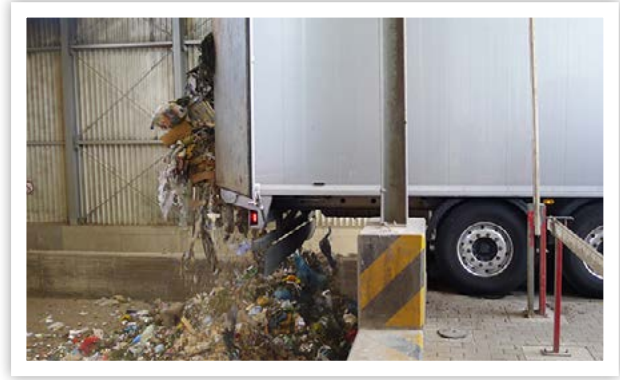


Step 2 – Before unloading: open the door lock on the rear doors and place the trailer in the required position

TIPS FOR MOVING-FLOOR DRIVERS



Step 3: Withdraw the green button on the control panel to release the pneumatic door locking device

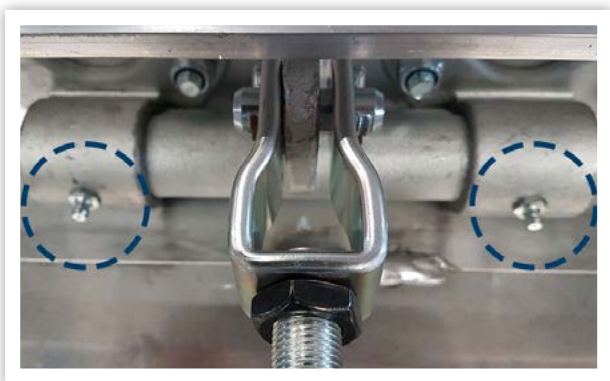


Step 4: Switch on the moving floor and start unloading your trailer

Tip 2: Lubricate the pneumatic rear door locking device until the grease squeezes out of the device

Repeated use and fouling can negatively influence the performance of the pneumatic rear door locking device. If you notice this is the case, immediately lubricate the pneumatic rear door locking device in order to avoid unsafe situations.

To make this possible, two lubrication points have been provided on the underside of your trailer. Clean the lubrication points and fill the system with grease using a grease gun.



1. Clean the lubrication points

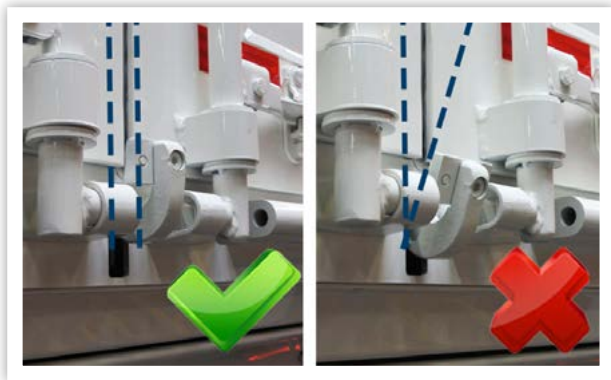


2. Grease the system with a grease gun

TIPS FOR MOVING-FLOOR DRIVERS

Tip 3: Make sure the pneumatic rear door locking device is always lined up parallel to the rear doors

The pneumatic rear door locking device works best if the locking unit is positioned parallel to the rear doors. If this is not the case, even once they have been released, the rear doors may not open. On the underside of your trailer, you can adjust the setting of your pneumatic rear door locking device. With a rotating movement, adjust the position of the pneumatic rear door locking device until it once again lines up parallel with the rear doors.



Make sure the pneumatic rear door locking device is always lined up parallel to the rear doors



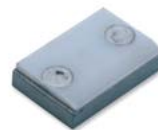
Adjust the position of the pneumatic rear door locking device with a rotating movement

Spare Parts

Worn parts? Your dealer or service partner will be happy to help you!



BDIC022001
Rear door claw



BDIC022004
Closing valve plate



BDIC022002
Single locking unit dacromet



BDIC022005
Pneumatic rear door locking set



BDIC022003
Bearing for claw 35mm



BDIC025008
Membrane cylinder 16"

Tip: Print out the drivers' tip and display it in the drivers' canteen, for all your colleagues.

Are you a driver working with moving floor trailer and do you have a useful tip for your colleagues? Submit your tip to marketing@knapen-trailers.nl and maybe we will publish it in the next newsletter.