

# TIPS FOR MOVING-FLOOR DRIVERS

## Prevent defects in your lighting system

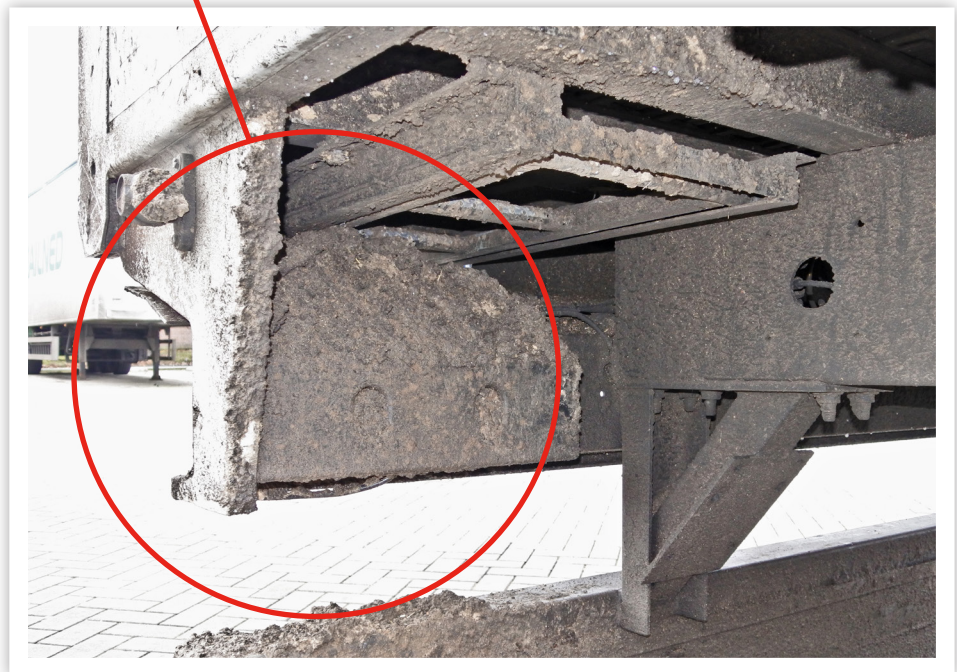
A breakdown or defect in your lighting system always occurs at an inopportune moment when you're on the road. Knapen Trailers' experts offer 2 practical tips to help avoid unnecessary breakdowns and the costs that go with them.

### **Tip 1: Clean the protective covers of your lighting system**

The protective cover of the lighting system is often overlooked when cleaning the trailer. This protective cover ensures the connectors of your lighting system remain clean and dry, thus assuring the lighting system performs correctly.

When the protection cover of a trailer is not cleaned in a timely manner, dirt and moisture will gather in it. This will result in corrosion of the lighting connectors, which can cause cable rot, breakdowns and short circuits. Consequently, your lighting does not work (correctly) anymore and repair is necessary.

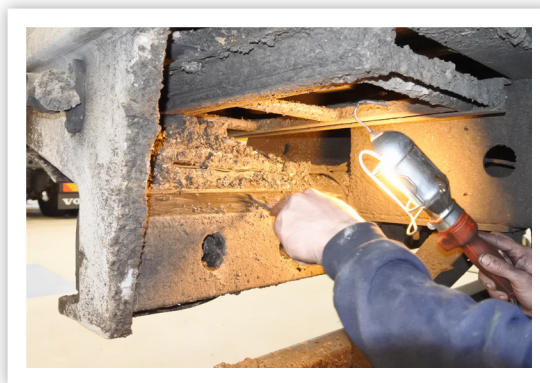
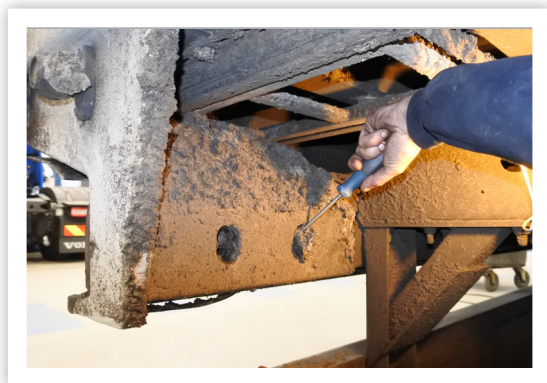
Knapen Trailers recommends that you regularly check your protective cover for any pollution or dirt.



# TIPS FOR MOVING-FLOOR DRIVERS

When the cover is dirty, you can simply follow the step-by-step plan below (NB: depending on the type of your lighting system, the protective cover may look differently):

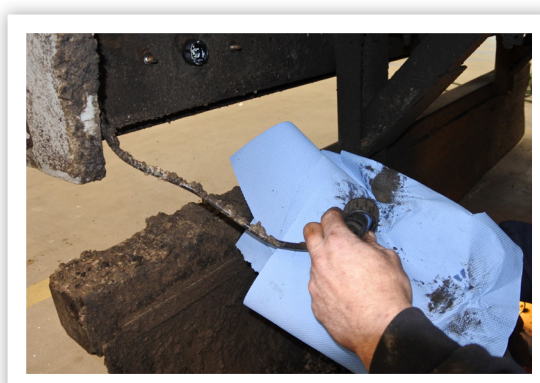
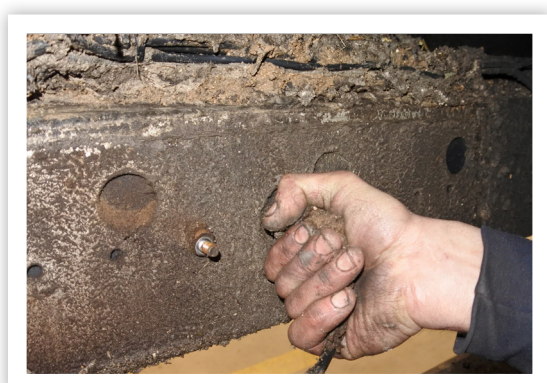
1. Clean the dirt off the outside of the lighting cover. Use a screwdriver to clean the holes that hold the bolts.



2. Unscrew the bolts and remove the cover.
3. Clean the protective cover both on the inside and outside with a spatula and a cloth.

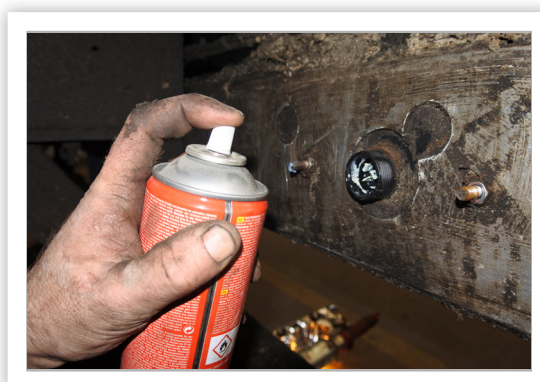
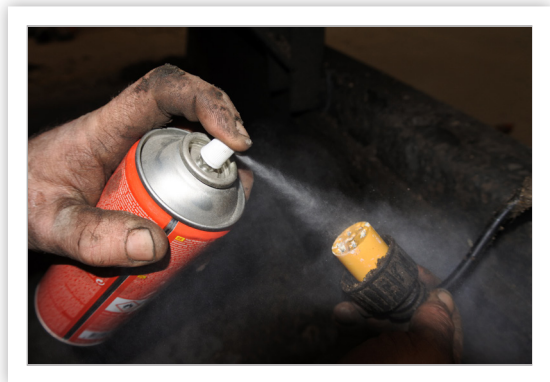


4. Unscrew the plug from the connector and then clean the plug, connector and the back plate thoroughly.



# TIPS FOR MOVING-FLOOR DRIVERS

5. Check the plug and connector for corrosion and spray them both with contact spray.



6. Reconnect the plug and reassemble the cover. Repeat this process for the cover at the other side of the trailer.

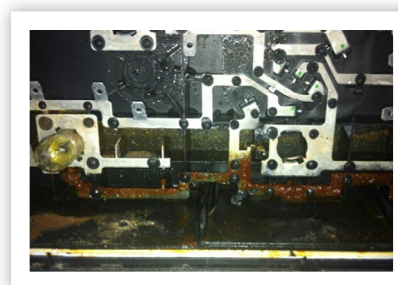
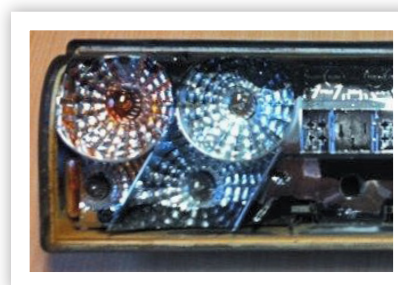


## Tip 2: Thoroughly check the seals of your lighting covers

Every light cover of the trailer has a rubber seal to protect the lights and the lighting plate behind them against moisture and dirt. Proper closure and sealing of the light covers are crucial for the lifespan of your lighting system.

After replacing a broken light or cleaning the light cover, the covers need to be replaced correctly. If the rubber seal and the light cover are not reassembled correctly, dirt and moisture will gather in the lighting system, resulting in corrosion, short circuits and therefore unnecessary costs.

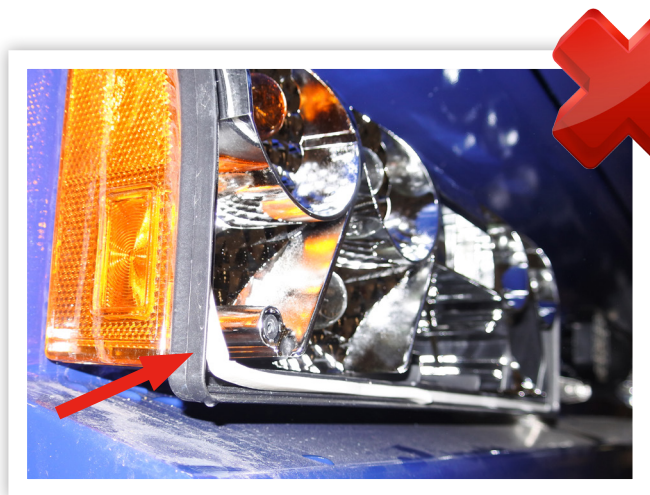
DIRT AND MOISTURE UNDER THE LIGHT COVER LEADS TO CORROSION,  
SHORT CIRCUITS AND THEREFORE TO AVOIDABLE COSTS



# TIPS FOR MOVING-FLOOR DRIVERS

Follow the step-by-step plan below to correctly assemble your light cover:

1. Place the rubber correctly to ensure perfect sealing.



2. Put the light cover back in place. Make sure that it joins up correctly.



If you unexpectedly find out that your cover, plug or similar parts are broken, you can of course order these from your dealer.

You are a moving floor trailer driver and you have a useful tip for your colleagues? Send your recommendation to [marketing@knapen-trailers.nl](mailto:marketing@knapen-trailers.nl) and you might find it included in our next newsletter.