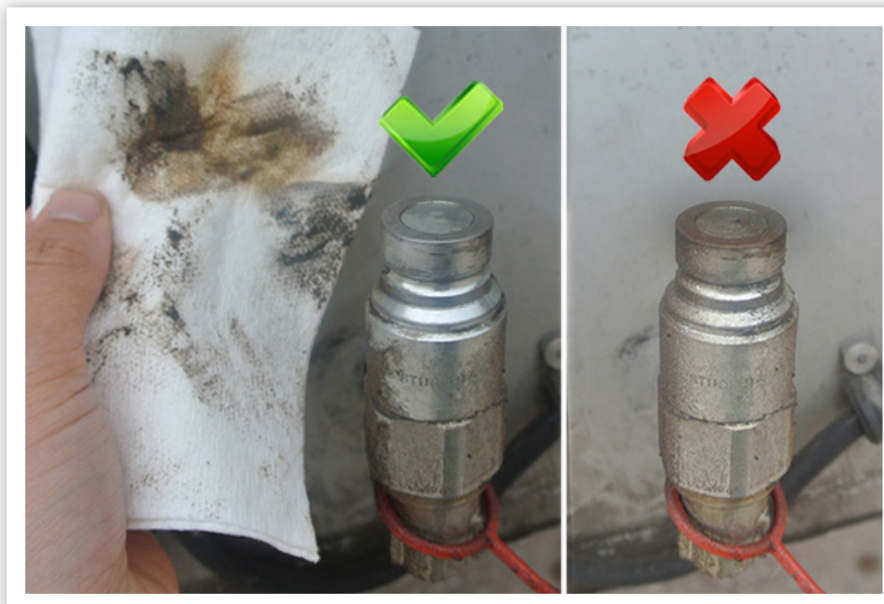


TIPS FOR MOVING-FLOOR DRIVERS

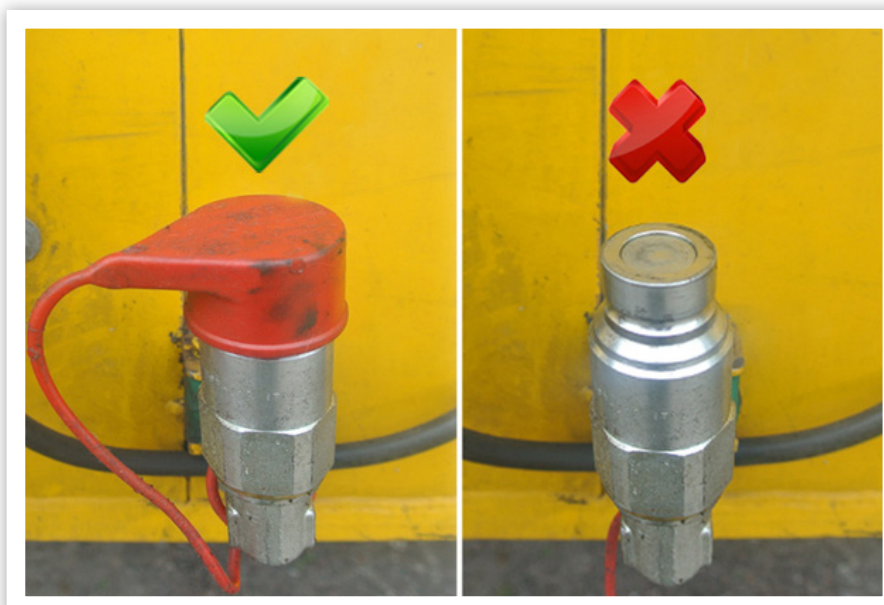
Hydraulic couplings

Your moving floor is hydraulically powered, in other words it moves by means of oil pressure. The oil is supplied by your truck and flows to your moving floor system via the hydraulic couplings between truck and trailer. With the exception of these couplings, your hydraulic system is completely closed. This means that dirt and moisture can penetrate your hydraulic system via your couplings: This causes rust and wear and tear, and therefore costs you money. The Knapen Trailers specialists give you useful tips to save unnecessary costs for wear and tear by using inexpensive means.



Tip 1: Cleaning

The hydraulic couplings are always a little dirty and damp. When you connect the hydraulic hoses you press this moisture and dirt into your hydraulic system. So always clean the couplings with a cleaning cloth first. Then connect everything.



Tip 2: Capping

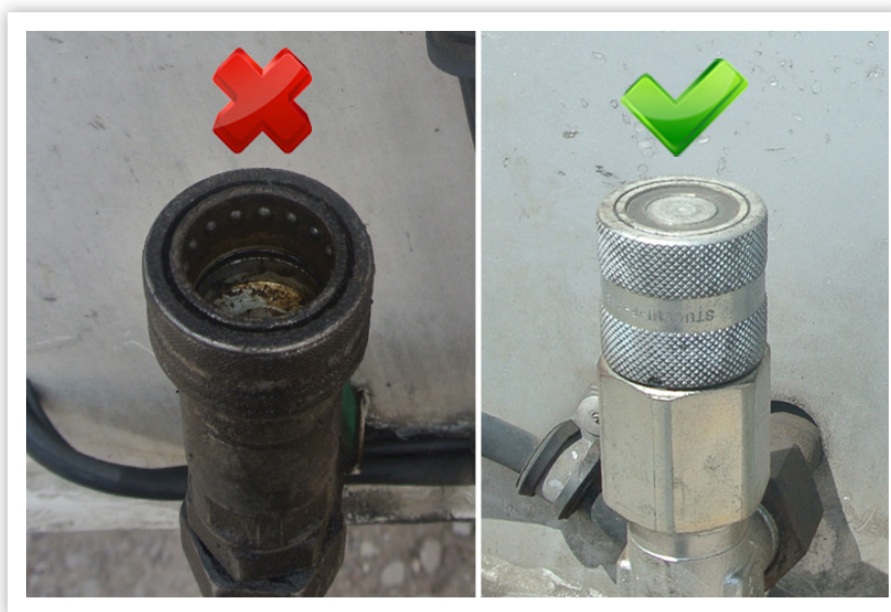
The couplings come with caps. Use them! Ensure directly after capping that no dirt or moisture gets on or into your coupling. Lost a cap? Then [your dealer](#) will be happy to find a replacement cap for you.



TIPS FOR MOVING-FLOOR DRIVERS

Tip 3: Avoid quick-release couplings that are not flat face.

Knapen trailers come from the factory as standard with flat-face quick-release couplings (see photo on the right). Because a flat-face quick-release coupling is very easy to clean. In a non flat-face coupling, moisture and dirt are easily left behind (see photo on the left). This type of quick-release coupling is hard to clean. As a result you will pollute your hydraulic system, which means extra costs you want to avoid. Furthermore, frost may cause ice formation in a non flat-face quick-release coupling, which makes connecting more difficult.



Why aren't my couplings simply facing downwards?

We can imagine that this is a question you ask yourself. The answer is simple: couplings turned downwards don't leave enough space for your hoses. Moreover, it makes your couplings very vulnerable during coupling of the trailer. The couplings cannot be turned sideways either, as in that case you require hoses that are considerably longer in order to bridge the turning radius. What is possible, is to point the couplings downwards by means of goose-neck pipes (see photo). This way, they are better protected against moisture and dirt. The goose-neck pipes are supplied by [your dealer](#) under article numbers BHYCO10265 (20mm pressure pipe) and BHYCO10266 (25mm return pipe).



Are you a driver of a moving-floor trailer with a handy tip for your colleagues? Send your tip to Marketing@knapen-trailers.nl and you could see it featured in the next newsletter.